

Pegasus® rescue hoist



A REVOLUTION IN RESCUE

Setting the new standard for safer, faster
and more efficient missions



Collins Aerospace



THE NEXT GENERATION RESCUE HOIST

Collins Aerospace is a world leader in developing, manufacturing, and supporting helicopter rescue hoist and aircraft cargo winch systems. Our Goodrich® rescue hoists have field-proven success in high demand, extreme environment missions and have been instrumental in saving lives during disaster relief efforts worldwide.

Pegasus® represents the next generation of our rescue hoists, advancing our traditions of mission reliability and innovative technology through its transformative design. Durable components, modular architecture and new features – such as the DASH (Data Acquisition Sensing and Health) system – mean the Pegasus® is ready to help ensure your missions are completed faster, safer and more efficiently.

Those in peril rely on you. You can rely on us.

GENERAL SPECIFICATIONS

| | |
|---------------|--|
| Weight | 106 lb. (48 kg) max |
| Cable length | 300 ft. (91 m) |
| Required load | 600 lb. (272 kg) |
| Input power | AC hoist: 115 VAC, 3-phase 400 Hz - 20 Amps DC hoist: 28 VDC - 150 Amps (max) |
| Speed | Up to 400 fpm (122 m/min) |

Our Pegasus rescue hoist provides superior performance, reliability and capability as well as lower cost of ownership to helicopter operators worldwide.

TRANSFORMATIVE HOIST DESIGN

40+ years of hoist design, market leadership and field experience results in the highest performing, most durable and easily maintainable hoist.

BETTER MISSION INSIGHT

Pegasus introduces the DASH system that measures and records essential hoist parameters (load, speed, cycles, temperatures, etc.) for better mission awareness and post-mission analysis.

SIMPLIFIED MAINTENANCE

A new drum design and traction system improves cable wrapping under all load conditions and reduces wear to extend overall cable life and usage.



PERFORMANCE WITH DURABILITY

Our highest performing hoist yet is designed to meet stringent DO-160 requirements that ensures reliable performance in all environmental conditions.

IMPROVED MISSION READINESS

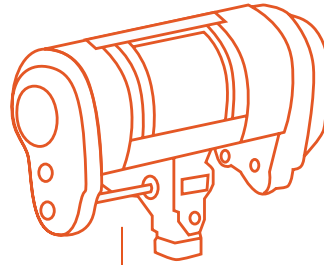
Modular and configurable architecture with field replaceable LRUs enables advanced service of hoist in the field, thus reducing downtime and improving mission readiness.

EASIER AIRCRAFT INTEGRATION

A CAN Bus architecture facilitates communication between the various hoist system components and simplifies integration onto new and existing helicopter platforms.

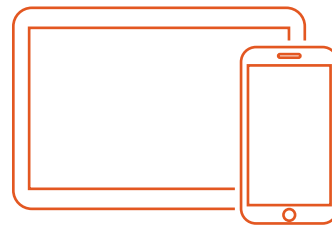
DASH (Data Sensing, Acquisition and Health)

HOIST



DASH 2 MODULE

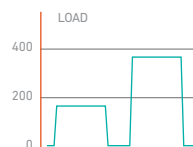
- Integrates information from sensors
- Stores mission data



HOIST APP

- Simple download
- Available CMM for step-through maintenance

MISSION



MAINTENANCE



MANAGEMENT

- 24/7 customer response center
- Technical Support
- Field Service
- Servicable

A LEAP FORWARD IN HOISTS

The Pegasus® Hoist represents a leap forward in hoist technology to meet the diverse demands of hoist operators, installers and rotorcraft manufacturers. It significantly improves over previous generations of hoists in installation, operation and maintenance.

INSTALLATION

- Interchangeable components can be used across installations
- Retrofittable to older rotorcraft platforms (same weight)
- Integrates with no change to rotorcraft wiring
- Easily customizable pendants and panels
- No special procedures for shipping cable cut cartridge
- Human external cargo (HEC) compliant

OPERATION

- Essential mission data to operator (Load on hook, error messages)
- Optional DVR/data feed to cockpit
- Data download available for mission logging and post- mission analysis
- Faster speed
- Improved pendant ergonomics
- Availability of trainee pendant
- Lighter pendant coil cord
- Better visibility of cable drum

FLIGHTSENSE™

FlightSense™ service offers full life-cycle support for reliable, cost-effective, and intelligent service; backed by a team of global support professionals, available 24/7/365 around the world. Advantages of the FlightSense program include:

- Predictable maintenance costs
- Highest quality OEM and certified repairs
- Guaranteed availability of Hoist
- Program management and a single point of contact

MAINTENANCE

- Modular hoist architecture
- Field replaceable components
- Mission data stored and available for download
- Online CMM
- Longer cable life
- Simplified cable changes
- Easily removable fairings
- New cable cut cartridge with 10-year TBO
- Monitoring of cable cut status
- Better visibility of oil sight glass
- Improved corrosion resistance
- No limit switches to adjust
- No special tools required

CONFIGURATION

- Data Acquisition, Sensing and Health (DASH)
- Camera*
- DVR*
- Hover Trim**
- Searchlight Control**
- Electronic Boom Control**

* Optional

** Platform Specific Integration

To learn more, go to
→ collinsaerospace.com/pegasus

Collins Aerospace

+1.714.984.1461

fax: +1.714.984.1675

collinsaerospace.com