

Goodrich® military cargo winches

HEAVY PULL POWER FOR YOUR MISSIONS

Performance, size and support advantages
from the cargo winch experts since 1955



Collins Aerospace

INNOVATION DESIGNED TO MAKE YOU MORE CAPABLE

For more than 60 years, Collins Aerospace has been engineering our innovative Goodrich® cargo winches that can pull more weight, take up less space and provide a longer life cycle than ever before.

See what just one of our innovations – translating drum technology – can do for your cargo operations.

Translating drum technology

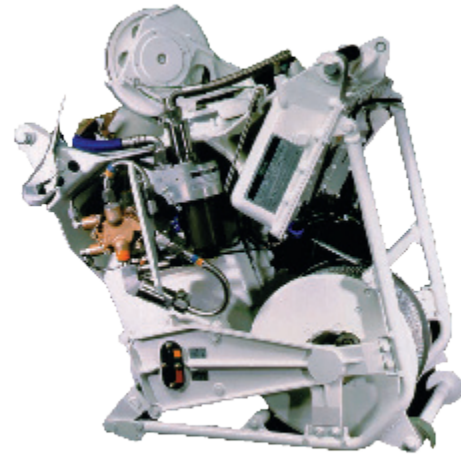
This technology enables cable storage on a multi-wrap, multi-layer drum in a tight space while maintaining internal fleet angles under 1.5 degrees. It's also a key innovation that enables our cargo winches to operate with greater speed, enhanced safety and a high external fleet angle for expanding mission capabilities.

Benefits of the translating drum

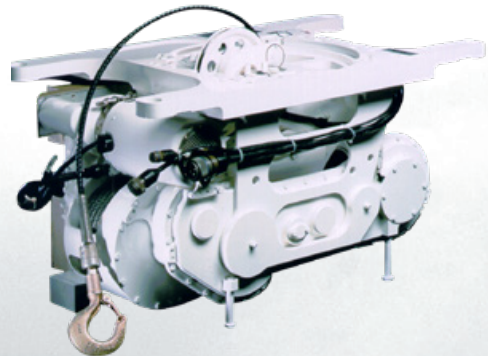
HIGH FLEET ANGLE OPERATION – Cargo loading operations can generate large external fleet angles on the hoist winch cable. Our winch's single-point payout transfers load directly into the winch housing for high fleet angle operations to the full capability of the aircraft cargo system.

CABLE LIFE – The amount of bending a cable undergoes will adversely affect its service life. Our translating drum technology's unique design ensures minimized cable bending during winding for less cable fatigue and longer operating life.

SMALLER FORM FACTOR – The translating drum design winds the cable with consistently tight, stacked alignment for maximum space efficiency. The result is a smaller and lighter winch assembly with superior power to weight ratio.



C-17 winch



C-130J winch



Custom winch design

A variety of factors can go into the type of winch you need for heavy-duty cargo pulling. It's why we offer full design, development, manufacture, assembly, inspection and test capabilities to every winch customer.

Our engineers will work with you to evaluate your requirements. Then, we'll take your winch project from conceptual design through development and qualification while providing life-cycle support. For lowest cost and greatest timing efficiency, as well as least risk, we can:

- Leverage an extensive database of existing products for direct parts application and streamlined modifications
- Use computer-aided design and simulation tools to evaluate the effects of component tolerance and environmental changes for reliable system performance
- Evaluate design components for strength, deformation, fatigue, tolerance and other parameters prior to the fabrication of parts for lower project risk
- Analyze gears, motors, clutches, brakes and other essential winch components for performance and lifetime reliability

Experience that delivers on your requirements

Collins Aerospace has a long history of developing aircraft cargo winches for the U.S. Department of Defense. We introduced our 15,000 pound capacity C-133 winch in 1955.

Today, we have the largest base of installed aircraft cargo winches for military applications.

Our Goodrich winches serve missions on the world's military cargo platforms, including the Boeing C-17, Lockheed Martin C-130J, Boeing CH-47, Embraer KC-390 and NHIndustries NH90. Our winches perform to the highest standards of quality and reliability.

Contact us to learn why OEMs count on Collins Aerospace Goodrich winches as the reliable solution for heavy-duty pulling applications.

To learn more, go to
→ collinsaerospace.com/hoistandwinch

Collins Aerospace

+1.714.984.1461

GoodrichHoists@collins.com