

Pro Line 21™ integrated avionics system for Hawker®

FLY WITH A STACKED DECK

Flight deck upgrades that take your
Pro Line 21 Hawker® into NextGen® airspace



Collins Aerospace

TAKE YOUR INVESTMENT BEYOND THE MANDATES

Pro Line 21™ displays bring much more than synthetic vision. Featuring integrated ADS-B Out annunciations and enabling Satellite Based Augmentation System (SBAS) approaches in Europe.

ADS-B OUT (MANDATE JANUARY 2020)

NextGen is transitioning from ground-based to space-based tracking, enabling more aircraft to fly more efficient routes with closer spacing. Complies with the latest standards for worldwide acceptance.

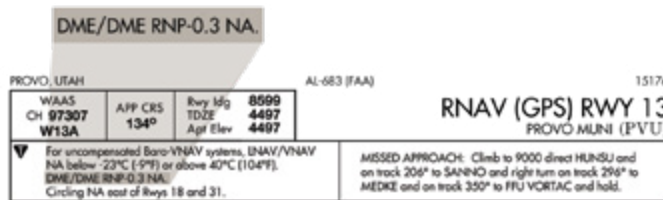
WAAS-CAPABLE GPS

WAAS is the technology that enables precision RNAV GPS approaches, LPV and the ADS-B Out mandate. Now is the time to update, so you can unlock NextGen airspace.

FLIGHT MANAGEMENT SYSTEM

Taking advantage of the latest routes and terminal procedures requires the latest in FMS technology.

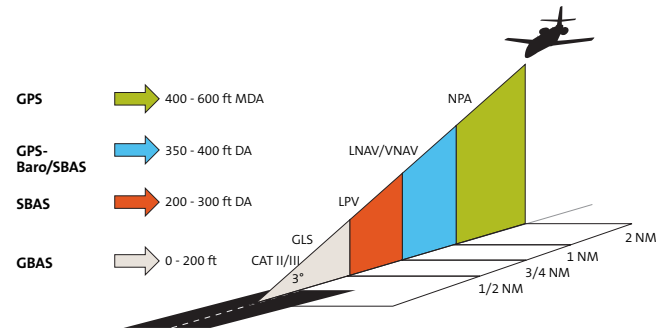
- Saves time and money by enabling LPV approaches
- Uses GPS as primary means of navigation



RNP

- Adds XYZ approaches
- Automatically shares takeoff and arrival data with IFIS and SVS
- More precision approaches available at more airports

LPV



- More than 4,000 LPV approaches available in the United States and continuing to grow

Without SBAS, you are restricted to the NPA approach minimums.

Synthetic vision – the new standard

Fly with increased confidence at night, or in any weather.

- Always know where you are relative to nearby terrain
- Stay oriented with your landing runway*, simply and visually
- See where your airplane is going with Flight Path Vector

*Runway depiction requires an additional SVS database.



Pro Line 21 upgrades for Hawker

Baseline package includes the latest AFD software version 10.4 and FMS software version 4.2 to support worldwide LPV/RNP and establish a baseline for the latest options like integrated ADS-B, IFIS 6 and SVS.

Special package pricing available when ADS-B, SVS and IFIS upgrades are combined.

Package price will vary depending on current configuration of the aircraft.

	UPGRADE PACKAGE	OPTION
(AFD 3010E) wall-to-wall ADI	✓	
Flight Path Vector	✓	
Integrated ADS-B annunciation	✓	
Enhanced engine indication	✓	
APV (Europe)	✓	Complies with TAWS Mode 5 monitoring requirements
FMS 4.x RNAV (GPS) approach	✓	
LPV approaches	✓	
Increased database memory	✓	
XYZ approaches	✓	
Integrated RAIM	✓	
FMS 4.2 RF legs (curved approach)	✓	
RNP 1/RNP 2/RNP 4	✓	
FMS runway depiction on SVS	✓	
LPV (EASA APV)	✓	
Beyond N73 and S60	✓	
WAAS GPS	✓	Enables ADS-B and LPV/APV
ADS-B (V2) transponder update	✓	V2 is also known as DO 260B
IFIS Version 6 electronic charts (chart link)	✓	Integrated Class 3 EFB
Synthetic Vision System on PFD	✓	
XM WX Satellite Weather		✓ Requires additional hardware
ARINC graphical weather		✓ Requires purchase of the data link option
Optional runway database		✓ Requires subscription to database
IMS-3500		✓
Second IFIS (dual charts for paperless operation)		✓
VHF data link (CMU-4000)		✓ Growth for CPDLC
HF-9000 high-frequency radio		✓
Airshow 500		✓
MFD video		✓ i.e., FLIR or security camera
Corporate Aircraft Service Program (CASP SM)		✓

OPTIONS

AIRCRAFT INFORMATION MANAGER (AIM)

The days of databases being out of date – or of trying to remember where you left the USB stick you used for database updates – are gone. With the IMS-3500 and AIM, Collins will deliver the database directly to the aircraft, send you a text message when the database is ready and, with a couple of keystrokes, transfer it to the FMS or IFIS as required.

DATA LINK (VHF)

Sends your FAA-filed flight plan directly to the aircraft.



HIGH-FREQUENCY (HF) RADIO

Collins Aerospace is the industry leader in HF radios.

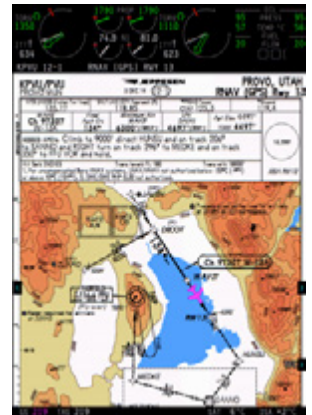
- A cost-effective solution that provides aircraft with worldwide communication capabilities
- Full-frequency HF system permits direct tuning of any of 280,000 frequencies between 2.0 and 29.9999 MHz in 100 Hz steps when operated in the discrete frequency mode
- Discrete frequency mode provides USB, UD, AM equivalent, CW, LSB and LD operation. The 99 user-programmed channels can be programmed to operate in any of these modes.
- Tuned directly from CDU

INTEGRATED EFB (IFIS)

Collins' Pro Line 21 IFIS helps pilots focus on flying. It integrates common EFB functions (e.g., charts, graphical weather and enhanced maps) into the Pro Line 21 suite.

With this integration, the FMS automatically shares flight-plan data with the IFIS. This enables automated chart selection, presenting aircraft position on chart, overlaying the flight plan on graphical weather and much more. Pilots have greater situational awareness while reducing their workload, compared with federated EFBs.

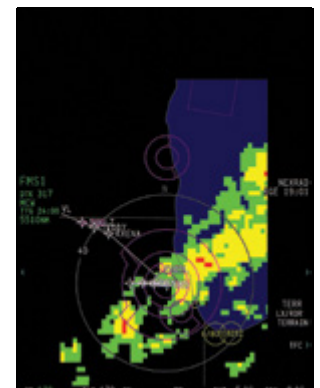
- Ownship on chart
- SIDS, STARs, approach, airport charts
- XM WX Satellite Weather®
- Enhanced maps with airways and intersections
- Geopolitical boundaries
- Chart link



Graphical weather



Lightning. SIGMETS. METARS.





YOUR TOTAL SOLUTION

Make the most of your avionics upgrade and enhance your operations by including Collins' ARINCDirectSM flight support services.

- Comprehensive flight planning
- Email
- Flight plan upload
- Flexible ARINCDirect Flight Operations System (FOS[®])



Learn how our personalized flight support can make managing your operations easier, start to finish:
collinsaerospace.com/arincdirect



CABIN SOLUTIONS

Make every flight more enjoyable with cabin options such as our Airshow[®] moving maps. Follow your flight in real time. Explore your destination or other global points of interest. Go mobile with the Airshow Mobile application for iPad[®] and Android[™] tablets.

CASPSM AND SERVICES

Our Corporate Aircraft Service Program (CASPSM) Essential is a cost-effective choice for services that keep you on wing while enhancing your aircraft's resale value. Designed for aircraft with lower annual flight hours, CASP Essential provides aircraft availability and budget predictability.

To learn more, go to
collinsaerospace.com

Collins Aerospace
+1.319.295.4085
Avionics@collins.com
collinsaerospace.com