



C460KL21001-1 CABIN AIR RECIRCULATION HEPA FILTER INSTALLATION KIT

PROVIDE FLIGHTS WITH HIGHER AIR PURITY

Simple-to-install HEPA filter solution

Installing a high-efficiency particulate air (HEPA) filter enables you to filter cabin recirculation air before it reaches the condenser mixer.

Currently, air is drawn from the cabin and passes through the prefilter, capturing large contaminant particles PM10 and PM2.5. Our HEPA filter kit is an addition to the installation filter kit C46031-4/-5/-6 and includes both a prefilter and HEPA filter.

Both filters are mounted inside an aluminum enclosure and easily slide into the existing filter box. Together, the prefilter and HEPA filter elements are designed to remove and trap at least 99.97% of the harmful airborne particles that have a diameter of 0.3 micron. These include pollen, dust, mites and airborne bacteria.

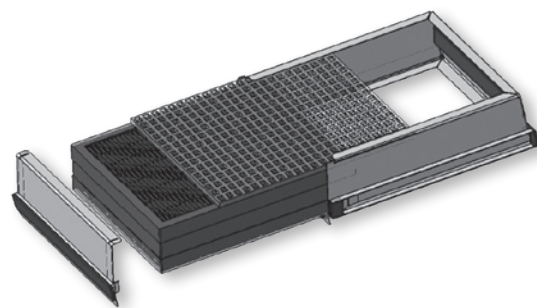
The filters are removable for periodic replacement.

KEY FEATURES AND BENEFITS

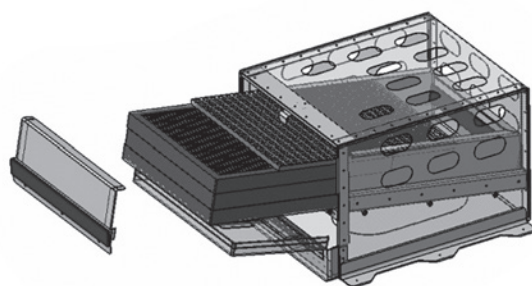
- Conveniently designed to slide directly into the pre-existing filter box
- Highly effective at trapping microscopic contaminants such as bacteria, viruses and other airborne contaminants in ECS system
- Designed as a retrofit unit for Dash-8 (-100/-200/-300) aircraft
- Low replacement cost for the prefilter and HEPA filter elements (part number C460PZ21001-1)
- Includes an updated IPC and AMM supplement

SPECIFICATIONS

Part number	C460KL21001-1
Applicability	DHC-8 Series 100, 200 and 300 (Post 1990) Hunting and C&D interiors and 200 series all interiors
Certification	Transport Canada: SA01-65 STC
Efficiency	99.97% on 0.3 micron particles
Labor	Approximately 10 minutes to replace and install the new filter kit
Installation	Slides directly into the existing filter box
Kit contents	Filter pack aluminum enclosure with one prefilter and one HEPA filter
Recommended replacement interval	C-check based on the actual condition inspected at every A-check
Delivery	F.O.B Winnipeg, MB, Canada



*Prefilter and HEPA Filter together
in aluminum casing*



*Prefilter and HEPA filter installation
in existing filter box*

Specifications subject to change without notice.