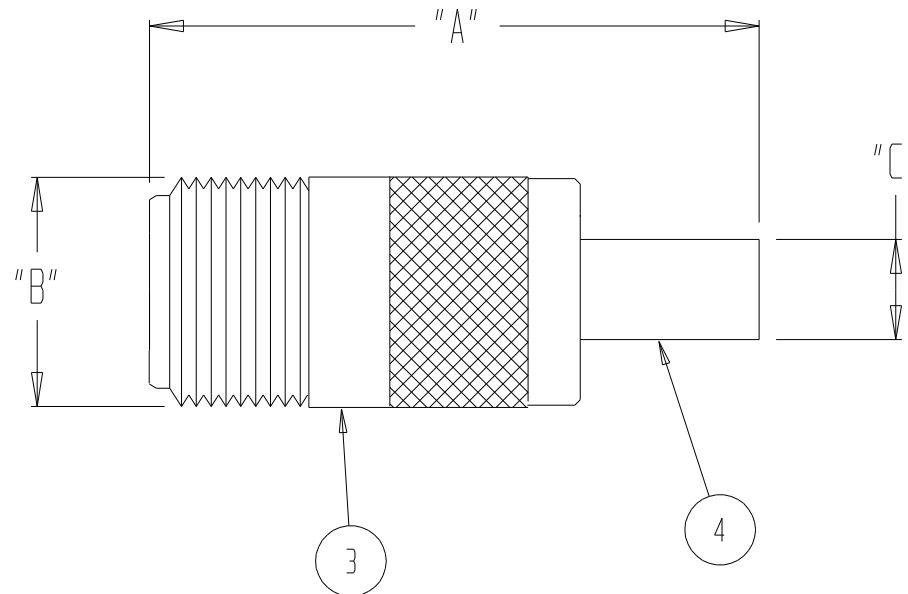


THIS DOCUMENT AND THE INFORMATION IT CONTAINS IS THE PROPERTY OF EMTEQ INC. AND MAY NOT BE USED IN ANY WAY WITHOUT THE EXPRESS WRITTEN CONSENT OF EMTEQ INC.

REV	REVISION	DATE	ER #	INTL
F	CLARIFY CALLOUT OF GOLD CRIMP TUBE	12/14/2007	7849	VML
G	CHANGE P/N FOR ITEM 6, HEATSHRINK	10/28/2009	10252	VML

### DIMENSIONAL INFORMATION

PART NO.	"A"	"B"	"C"	ASS'Y INSTRUCTIONS
NFS130-1	1.50 (38.1)	0.63 (16.0)	0.22 (5.6)	ES-105-26
NFS165-1	1.50 (38.1)	0.63 (16.0)	0.25 (6.4)	ES-105-1
NFS195-1	1.50 (38.1)	0.63 (16.0)	0.25 (6.4)	ES-105-1
NFS205-1	1.50 (38.1)	0.63 (16.0)	0.30 (7.6)	ES-105-1
NFS240-1	1.50 (38.1)	0.63 (16.0)	0.30 (7.6)	ES-105-1
NFS295-1	1.62 (41.2)	0.63 (16.0)	0.39 (9.9)	ES-105-6
NFS340-1	1.62 (41.2)	0.63 (16.0)	0.39 (9.9)	ES-105-6
NFS400-1	1.68 (42.7)	0.63 (16.0)	0.48 (12.2)	ES-105-6
NFS500-1	1.81 (46.0)	0.63 (16.0)	0.56 (14.2)	ES-105-6



#### SPECIFICATIONS:

- ELECTRICAL
  - IMPEDANCE: 50 OHMS
  - FREQUENCY RANGE: 0 TO 4 GHZ
  - VOLTAGE RATING: 1,500 V RMS
  - DIELECTRIC WITHSTANDING VOLTAGE: 5,000 V RMS
  - INSULATION RESISTANCE: 5,000 MEGOHMS MIN

- MECHANICAL
  - TERMINATION STYLE: INNER CONTACT - SOLDER  
OUTER CONTACT - CRIMP
  - TEMPERATURE RANGE: -65° C TO + 165° C
  - FINISHES:  
BODY FINISH: PROPRIETARY NICKEL  
CONTACT FINISH: GOLD PLATED PER MIL-G-45204

DESIGNED IN ACCORDANCE WITH MIL-C-39012 STANDARDS.

NFS	500-1	400-1	340-1	295-1	240-1	205-1	195-1	165-1	130-1	PART NUMBER	DESCRIPTION	ITEM
										29-174-4	DURABLE HEATSHRINK	6
										ATUM 1/2 BLK		
										29-174-2	TUBE, INNER	5
										29-109-9		
										29-137-2	CRIMP TUBE	4
										29-138-2		
										29-140-2		
										29-140-4		
										29-100-92		
										29-100-56		
										29-100-74/29-100-4		
										29-141-2		
										29-100-68		
										29-100-63		
										09-165-1	BODY	3
										09-167-1		
										09-163-4		
										09-163-2		
										09-163-1		
										09-163-3	CONTACT	2
										06-423-13		
										06-684-4		
										06-423-14		
										06-423-5		
										06-423-7		
										06-423-9		
										06-423-4		
										15-469-10		
										15-345-3		
										15-469-8	INSULATOR( REAR )	1
										15-469-4		
										15-469-5		
										15-469-3		

#### LIST OF MATERIAL

MATERIAL	SCALE	SIZE B	DATE 8/18/99	 5349 S. EMMER DRIVE NEW BERLIN, WI 53151 (888) 679-6170
FINISH	TOLERANCES UNLESS NOTED .XX = ± .03 .XXX = ± .010 ANGLES ± 1°	DATE 11/02/2009	DESIGNED J. HERMAN	
CAD GENERATED AND MAINTAINED DRAWING -- DO NOT SCALE			CHECKED T. FORST	JACK, TYPE 'N' STRAIGHT CONNECTOR
NOTICE -- ALL CHANGES TO THIS DOCUMENT ARE CONTROLLED BY EMTEQ INC. / UNLESS OTHERWISE STATED, ALL REPRODUCTIONS OF THIS DOCUMENT ARE NOT CONTROLLED BY EMTEQ INC.			APPROVED T. FORST 01/11/2010	CAGE CODE 06WH3 DWG # NFSXXX-1 SHT 1 OF 1