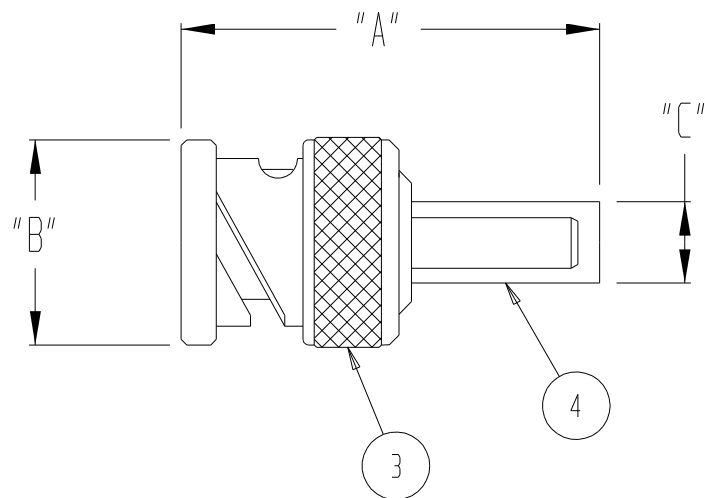


THIS DOCUMENT AND THE INFORMATION IT CONTAINS IS THE PROPERTY OF EMTEQ INC. AND MAY NOT BE USED IN ANY WAY WITHOUT THE EXPRESS WRITTEN CONSENT OF EMTEQ INC.

REV	REVISION	DATE	ER #	INTL
LJ02	ADD CONTACT FOR 130-1 & 275-075-1, UPDATE DIM INFO	03/10/2010	10630	VML
	CHG HEATSHRINK FROM -4 TO -2 FOR BMS275	1/24/2011	11559	VML

DIMENSIONAL INFORMATION

PART NO.	"A"	"B"	"C"	CABLE ASS'Y. (REF)
BMS125-075-1	1.2 (30.5)	0.55 (14.0)	0.22 (5.6)	ES-105-1
BMS130-1	1.2 (30.5)	0.55 (14.0)	0.22 (5.6)	ES-105-1
BMS165-1	1.2 (30.5)	0.55 (14.0)	0.25 (6.4)	ES-105-1
BMS175-075-1	1.13 (28.7)	0.55 (14.0)	0.25 (6.4)	ES-105-1
BMS190-075-1	1.13 (28.7)	0.55 (14.0)	0.25 (6.4)	ES-105-1
BMS195-1	1.13 (28.7)	0.55 (14.0)	0.25 (6.4)	ES-105-1
BMS205-1	1.2 (30.5)	0.55 (14.0)	0.30 (7.6)	ES-105-1
BMS225-1	1.13 (28.7)	0.55 (14.0)	0.30 (7.6)	ES-105-1
BMS240-1	1.13 (28.7)	0.55 (14.0)	0.30 (7.6)	ES-105-1
BMS275-075-1	1.13 (28.7)	0.55 (14.0)	0.30 (7.6)	ES-105-56
BMS295-1	1.72 (43.7)	0.55 (14.0)	0.39 (9.9)	ES-105-7
BMS340-1	1.72 (43.7)	0.55 (14.0)	0.39 (9.9)	ES-105-7
BMS400-1	1.78 (45.2)	0.55 (14.0)	0.39 (9.9)	ES-105-7
BMS410-1	1.88 (47.8)	0.55 (14.0)	0.56 (14.2)	ES-105-11
BMS500-1	1.88 (47.8)	0.55 (14.0)	0.56 (14.2)	ES-105-11



SPECIFICATIONS:

1) ELECTRICAL

IMPEDANCE: 50 OHMS

*75 OHMS

FREQUENCY RANGE: 0 TO 4 GHZ

VOLTAGE RATING: 500 V RMS

DIELECTRIC WITHSTANDING VOLTAGE: 1,500 V RMS

INSULATION RESISTANCE: 5,000 MEGOHMS MIN

2) MECHANICAL

TERMINATION STYLE: INNER CONTACT - SOLDER

OUTER CONTACT - CRIMP

TEMPERATURE RANGE: -65° C TO + 165° C

FINISHES:

BODY FINISH: PROPRIETARY NICKEL

CONTACT FINISH: GOLD PLATED PER MIL-G-45204

DESIGNED IN ACCORDANCE WITH MIL-C-39012 STANDARDS.

BMS	500-1	410-1	400-1	340-1	295-1	*275-075-1	240-1	225-1	205-1	195-1	*190-075-1	*175-075-1	165-1	130-1	*125-075-1	PART NUMBER	DESCRIPTION	ITEM
																ATUM 1/4 BLK		
																29-174-2	DURABLE HEATSHRINK	5
																29-174-4		
																29-100-155		
																29-100-162		
																29-140-4		
																29-100-12		
																29-100-74/29-100-4		
																29-100-49		
																29-140-2		
																29-138-2		
																29-137-2	CRIMP TUBE	4
																29-100-92		
																29-100-56		
																29-100-68		
																29-141-2		
																29-100-63		
																09-123-5		
																02-1487-2		
																09-186-1		
																09-123-1		
																09-123-4		
																09-123-3	BODY	3
																09-124-1		
																09-123-2		
																09-125-2		
																06-296-2		
																06-672-8		
																06-672-17		
																06-672-4		
																06-296-8	CONTACT	2
																06-296-18		
																06-296-12		
																06-296-4		
																15-469-26		
																15-469-11		
																15-469-6		
																15-469-19		
																15-469-10		
																15-469-3		
																15-469-4	INSULATOR(REAR)	1
																15-469-8		
																15-469-17		
																15-469-5		
																15-345-3		

PARTS LIST

MATERIAL	SCALE	SIZE B	DATE 8/24/99	<p>5349 SOUTH EMMER DRIVE NEW BERLIN, WI 53151 (888) 679-6170</p>
FINISH	TOLERANCES UNLESS NOTED .XX = ± .03 .XXX = ± .010 ANGLES ± 1°		DRAWN J. HERMAN	
	CAD GENERATED AND MAINTAINED DRAWING -- DO NOT SCALE		DESIGNED	
APPROVED T FORST 01/27/2011			CHECKED [Signature] 01/25/2011	
CAGE CODE 06WH3		DWG #	BMSxxx-1	SHT 1 OF 1

NOTICE -- ALL CHANGES TO THIS DOCUMENT ARE CONTROLLED BY EMTEQ INC / UNLESS OTHERWISE STATED, ALL REPRODUCTIONS OF THIS DOCUMENT ARE NOT CONTROLLED BY EMTEQ INC