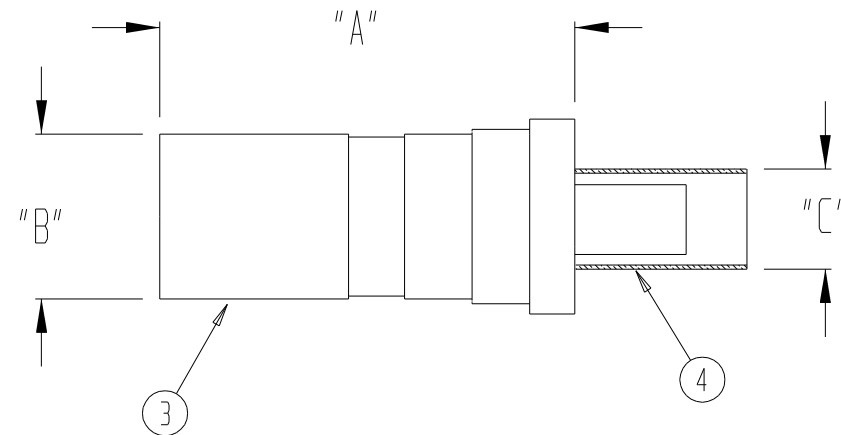


THIS DOCUMENT AND THE INFORMATION IT CONTAINS IS THE PROPERTY OF EMTEQ INC. AND MAY NOT BE USED IN ANY WAY WITHOUT THE EXPRESS WRITTEN CONSENT OF EMTEQ INC.

REV	REVISION	DATE	ER #	INTL
G	ADD 488-1 TO PARTS LIST	04/30/2009	9659	VML
H	CHANGE P/N'S, ITEM 5, HEATSHRINK	10/28/2009	10252	VML

DIMENSIONAL INFORMATION

PART NO.	"A"	"B"	"C"	CABLE INSTRUCTIONS
AGM1130-1	1.20 (30.5)	0.48 (12.2)	0.22 (5.6)	ES-105-26
AGM1165-1	1.20 (30.5)	0.48 (12.2)	0.25 (6.4)	ES-105-1
AGM1195-1	1.20 (30.5)	0.48 (12.2)	0.25 (6.4)	ES-105-1
AGM1205-1	1.20 (30.5)	0.48 (12.2)	0.30 (7.6)	ES-105-1
AGM1225-1	1.20 (30.5)	0.48 (12.2)	0.30 (7.6)	ES-105-1
AGM1240-1	1.20 (30.5)	0.48 (12.2)	0.30 (7.6)	ES-105-1
AGM1295-1	1.20 (30.5)	0.48 (12.2)	0.39 (9.9)	ES-105-6
AGM1340-1	1.20 (30.5)	0.48 (12.2)	0.39 (9.9)	ES-105-6
AGM1400-1	1.20 (30.5)	0.48 (12.2)	0.38 (9.7)	ES-105-6
AGM1488-1	1.20 (30.5)	0.48 (12.2)	0.61 (15.5)	ES-105-29
AGM1500-1	1.20 (30.5)	0.48 (12.2)	0.56 (14.2)	ES-105-6



SPECIFICATIONS:

- 1) ELECTRICAL
 IMPEDANCE: 50 OHMS
 FREQUENCY RANGE: 0 TO 5 GHZ
 VOLTAGE RATING: 1,000 V RMS
 DIELECTRIC WITHSTANDING VOLTAGE: 1,500 V RMS
 INSULATION RESISTANCE: 5,000 MEGOHMS MIN

- 2) MECHANICAL
 TERMINATION STYLE: INNER CONTACT - SOLDER
 OUTER CONTACT - CRIMP
 TEMPERATURE RANGE: -65° C TO + 165° C
 FINISHES:
 BODY FINISH: PROPRIETARY NICKEL
 CONTACT FINISH: GOLD PLATED PER MIL-G-45204
 DESIGNED IN ACCORDANCE WITH ARINC MIL-C-39012 STANDARDS.

500-1	488-1	400-1	340-1	295-1	240-1	225-1	205-1	195-1	165-1	130-1	PART NUMBER	DESCRIPTION	ITEM
											29-109-9	INNER TUBE (130-1 ONLY)	7
1	1	1	1	1	1	1	1	1	1	1	SP6M1-1	MOUNTING HARDWARE	6
1	1	1	1	1	1	1	1	1	1	1	RR6M1-1		
			1	1							ATUM 1/2 BLK	DURABLE HEATSHRINK	5
1	1	1				1	1	1	1	1	29-174-2		
											29-174-4	CRIMP TUBE	4
	1										29-142-2		
				1							29-141-2		
									1		29-140-2		
									1		29-140-4		
										1	29-138-2		
								1			29-137-2		
						1					29-100-12		
1											29-100-92		
		1									29-100-56		
			1								29-100-68		
				1							29-100-63		
									1		29-100-4/29-100-74		
	1										02-1221-2	BODY	3
								1			09-193-5		
1											09-204-1		
										1	09-202-1		
		1									09-193-4		
			1	1							09-193-3		
				1			1				09-193-2		
								1	1		09-193-1		
1	1										06-682-10		
		1									06-665-20		
										1	06-665-22		
			1	1							06-665-10		
					1	1	1				06-665-4		
								1	1		06-665-16		
1	1										15-345-3	INSULATOR (REAR)	1
						1					15-469-17		
										1	15-469-10		
		1									15-469-8		
			1	1							15-469-5		
				1		1					15-469-4		
								1	1		15-469-3		
AGM1500-1	AGM1488-1	AGM1400-1	AGM1340-1	AGM1295-1	AGM1240-1	AGM1225-1	AGM1205-1	AGM1195-1	AGM1165-1	AGM1130-1	PART NUMBER	DESCRIPTION	ITEM

PARTS LIST

MATERIAL	SCALE	SIZE B	DATE 8/25/99	5349 S. EMMER DRIVE NEW BERLIN, WI 53151 (888) 679-6170
	TOLERANCES UNLESS NOTED .XX = ± .03 .XXX = ± .010 ANGLES ± 1°		DRAWN J. HERMAN	
FINISH	CAD GENERATED AND MAINTAINED DRAWING -- DO NOT SCALE		DESIGNED	CONTACT, MODIFIED SIZE 1, ARINC 600
	NOTICE -- ALL CHANGES TO THIS DOCUMENT ARE CONTROLLED BY EMTEQ INC / UNLESS OTHERWISE STATED, ALL REPRODUCTIONS OF THIS DOCUMENT ARE NOT CONTROLLED BY EMTEQ INC		CHECKED 11/02/2009 T. FORST	
			APPROVED 01/11/2010	CAGE CODE 06WH3
			DWG #	AGM1xxx-1
			SHT 1 OF 1	FILE: AGM1xxx-1.dpt