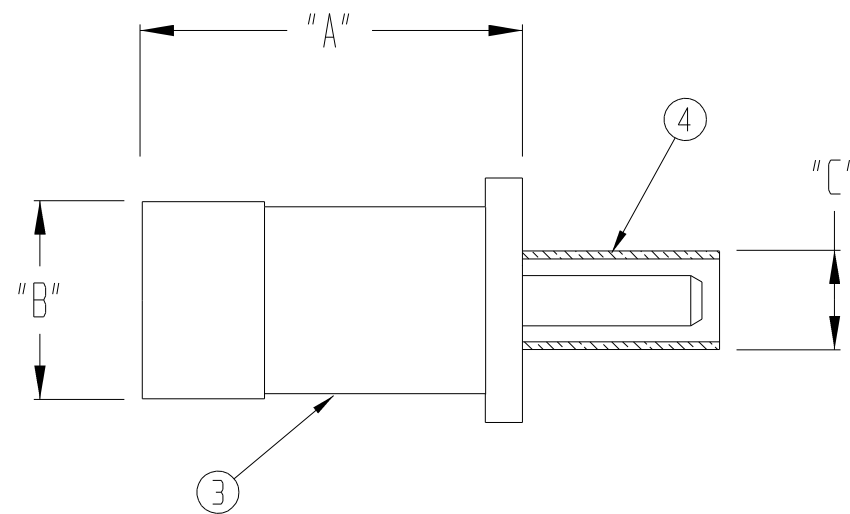


THIS DOCUMENT AND THE INFORMATION IT CONTAINS IS THE PROPERTY OF EMTEQ INC. AND MAY NOT BE USED IN ANY WAY WITHOUT THE EXPRESS WRITTEN CONSENT OF EMTEQ INC.

REV	REVISION	DATE	EN #	INTL
F	CORRECT HEATSHRINK CALLOUTS	08/18/2009	10025	VML

DIMENSIONAL INFORMATION

PART NO.	"A"	"B"	"C"	ASSY INSTRUCTIONS
A61130-1	0.96 (24.4)	0.50 (12.7)	0.22 (5.6)	ES-105-26
A61165-1	0.96 (24.4)	0.50 (12.7)	0.25 (6.4)	ES-105-1
A61195-1	0.96 (24.4)	0.50 (12.7)	0.25 (6.4)	ES-105-1
A61205-1	0.96 (24.4)	0.50 (12.7)	0.30 (7.6)	ES-105-1
A61225-1	0.96 (24.4)	0.50 (12.7)	0.30 (7.6)	ES-105-1
A61240-1	0.96 (24.4)	0.50 (12.7)	0.30 (7.6)	ES-105-1
A61295-1	0.96 (24.4)	0.50 (12.7)	0.39 (9.9)	ES-105-6
A61340-1	0.96 (24.4)	0.50 (12.7)	0.39 (9.9)	ES-105-6
A61400-1	0.96 (24.4)	0.50 (12.7)	0.38 (9.7)	ES-105-6
A61488-1	0.96 (24.4)	0.50 (12.7)	0.61 (15.5)	ES-105-29
A61500-1	0.96 (24.4)	0.50 (12.7)	0.56 (14.2)	ES-105-6



SPECIFICATIONS:

1) ELECTRICAL

IMPEDANCE: 50 OHMS
 FREQUENCY RANGE: 0 TO 11 GHZ
 VOLTAGE RATING: 500 V RMS
 DIELECTRIC WITHSTANDING: 1,500 V RMS
 VOLTAGE:
 INSULATION RESISTANCE: 5,000 MEGOHMS MIN

2) MECHANICAL

TERMINATION STYLE: INNER CONTACT - SOLDER
 OUTER CONTACT - CRIMP
 TEMPERATURE RANGE: -65° C TO + 165° C
 FINISHES:
 BODY FINISH: PROPRIETARY NICKEL
 CONTACT FINISH: GOLD PLATED PER MIL-G-45204

DESIGNED IN ACCORDANCE WITH MIL-C-39012 STANDARDS.

4	4	4	4	4	4	4	4	4	4	4	4	W-178105012	BLUE WASHER	13
4	4	4	4	4	4	4	4	4	4	4	4	990-0019-062	SPLIT LOCK WASHER	12
4	4	4	4	4	4	4	4	4	4	4	4	MS35275-219	FILLISTER HEAD	11
2	2	2	2	2	2	2	2	2	2	2	2	W-0506-0625-018	FLAT WASHER	10
1	1	1	1	1	1	1	1	1	1	1	1	RR61-1	RETAINING RING	9
1	1	1	1	1	1	1	1	1	1	1	1	5671-110-70	O-RING	8
1	1	1	1	1	1	1	1	1	1	1	1	SP61-1	SPRING	7
1	1	1	1	1	1	1	1	1	1	1	1	211217-2	RETENTION PLATE	6
			1	1								ATUM 1/2 BLK	DURABLE HEATSHRINK	5
1	1	1										ATUM 3/4 BLK		
					1	1	1	1	1	1		ATUM 3/8 BLK		
			1									29-100-56		
										1		29-139-2/29-134-4	CRIMP TUBE	4
												29-142-2		
1												29-100-12		
					1							29-141-2		
											1	29-138-2		
												29-137-2		
1												29-100-92		
			1									29-100-68		
						1						29-100-63		
											1	29-100-74/29-100-4		
			1									75-908-8BS	BODY	3
												75-962-1BS		
1											1	02-906-10		
				1	1							02-906-9		
												02-906-6		
												02-906-4		
											1	02-906-2		
1												02-167-2		
												06-665-24		
			1									06-665-38		
												06-665-2		
1	1											06-682-8	CONTACT	2
												06-665-12		
												06-665-6		
											1	06-665-18		
												06-665-12		
												15-496-11		
			1									15-496-8	INSULATOR(REAR)	1
												15-469-17		
1	1											15-345-3		
												15-469-5		
												15-496-4		
												15-469-3		

A61#	500-1	488-1	400-1	340-1	295-1	240-1	225-1	205-1	195-1	165-1	130-1	PART NUMBER	DESCRIPTION	ITEM
------	-------	-------	-------	-------	-------	-------	-------	-------	-------	-------	-------	-------------	-------------	------

LIST OF MATERIAL

MATERIAL	SCALE	NONE	SIZE	B	DATE	8/4/99
	CAGE CODE	06WH3	DRAWN	J. HERMAN	DESIGNED	
FINISH	TOLERANCES UNLESS NOTED		CHECKED			
	.XX = ± .03		T. FORST			
	.XXX = ± .010		APPROVED			
ANGLES ± 1°		APPROVED		08/18/2009	DWG #	A61XXX-1
5349 SOUTH EMMER DRIVE NEW BERLIN, WI 53151 (888) 679-6170						SHT
CONTACT, SIZE 1, ARINC 600						1
						OF 1