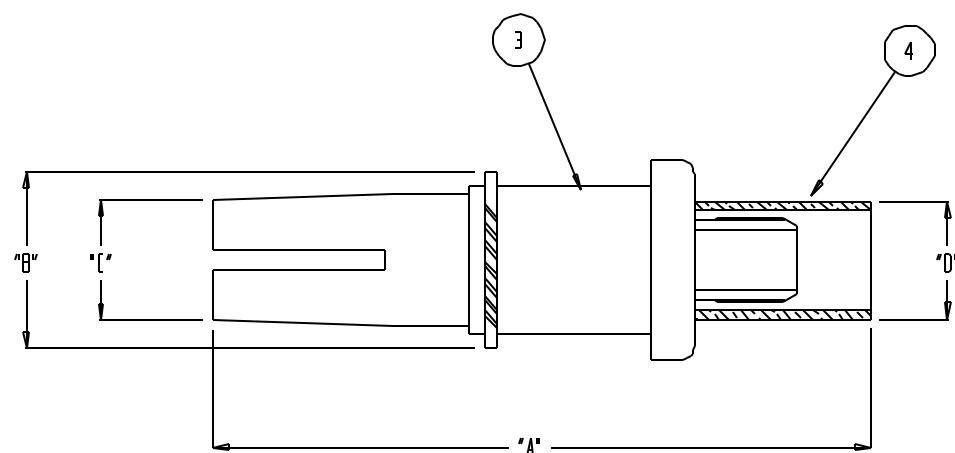


THIS DOCUMENT AND THE INFORMATION IT CONTAINS IS THE PROPERTY OF EMTEQ INC. AND MAY NOT BE USED IN ANY WAY WITHOUT THE EXPRESS WRITTEN CONSENT OF EMTEQ INC.

REV	REVISION	DATE	EN #	INTL
IR	INITIAL RELEASE	8/31/99	---	JPH

DIMENSIONAL INFORMATION

PART NO.	"A"	"B"	"C"	"D"
A47195-1	1.40 (35.6)	0.26 (6.6)	0.31 (7.9)	0.30 (7.6)



SPECIFICATIONS:

1) ELECTRICAL

IMPEDANCE: 50 OHMS
 FREQUENCY RANGE: 0 TO 5 GHZ
 VOLTAGE RATING: 1,000 V RMS
 DIELECTRIC WITHSTANDIN VOLTAGE: 1,500 RMS
 INSULATION RESISTANCE: 5,000 MEGOHMS MIN.

2) MECHANICAL

TERMINATION STYLE: INNER CONTACT - SOLDER
 OUTER CONTACT - CRIMP

TEMPERATURE RANGE: -55° C TO +125° C

FINISHES:

BODY FINISH: GOLD PLATED PER MIL-G-45204
 CONTACT FINISH: GOLD PLATED PER MIL-G-45204

DESIGNED IN ACCORDANCE WITH ARINC 404B STANDARDS.

1	ATUM 1/2 BLK	DURABLE HEATSHRINK	5
1	29-100-4/29-100-74	CRIMP TUBE	4
1	D2-1032-2	BODY	3
1	06-707-2	CONTACT	2
1	15-469-3	INSULATOR(REAR)	1
195-1	PART NUMBER	DESCRIPTION	ITEM
A43#	LIST OF MATERIAL		

MATERIAL	SCALE	NONE	SIZE	B	DATE	8/31/99
	CAGE CODE	06WH3	DESIGNED	J. HERMAN		
FINISH	TOLERANCES UNLESS NOTED		CHECKED			
	.XX = ± .02	.XXX = ± .005	APPROVED			
		ANGLES ± 1/2°	FILE	A47195-1	DWG #	A47195-1
					SHT	1 OF 2



S84 W18693 ENTERPRISE DRIVE
 MUSKEGO, WI 53150
 (888) 679-6170

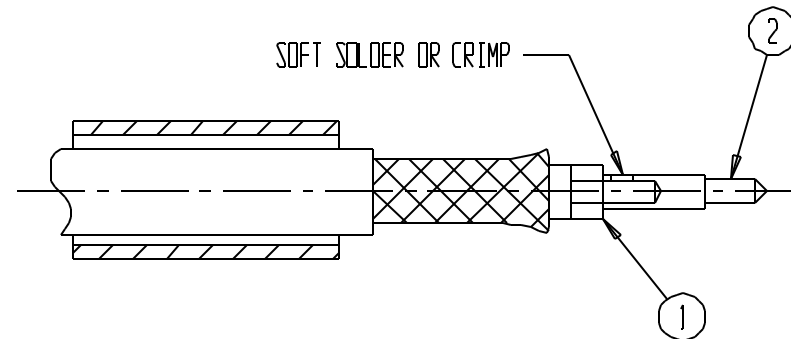
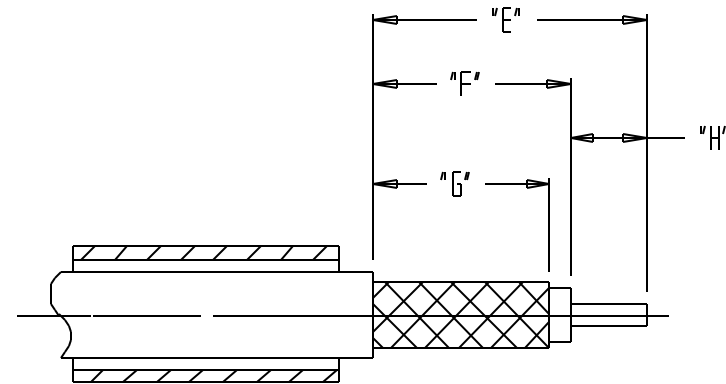
CONTACT, SIZE 7, ARINC 404

THIS DOCUMENT AND THE INFORMATION IT CONTAINS IS THE PROPERTY OF EMTEQ INC. AND MAY NOT BE USED IN ANY WAY WITHOUT THE EXPRESS WRITTEN CONSENT OF EMTEQ INC.

REV	REVISION	DATE	EN #	INTL
IR	INITIAL RELEASE	8/31/99	---	JPH

DIMENSIONAL INFORMATION

PART NO.	"E"	"F"	"G"	"H"	ASS'Y INSTRUCTIONS
A47195-1	0.80 (20.3)	0.53 (13.5)	0.31 (7.9)	0.27 (6.9)	ES-105-1B




CABLE ASSEMBLY INSTRUCTIONS:

- 1.) STRIP CABLE PER DIMENSIONS, DO NOT NICK THE BRAID OR CENTER CONDUCTOR, SLIDE CRIMP TUBE ONTO CABLE AND PUSH BACK OUT OF WAY BEFORE REMOVING MATERIAL.
- 2.) DO NOT REMOVE THE ALUMINUM MYLAR FOIL SHIELD FROM THE DIELECTRIC.
- 3.) SLIDE BACK ADHESIVE HEAT SHRINK AND ANY OTHER LABELS OVER THE CABLE AT THIS TIME.
- 4.) FLARE END OF CABLE BRAID BY ROTATING CABLE DIELECTRIC. SLIDE CABLE INSULATOR ONTO CENTER CONDUCTOR UP AGAINST DIELECTRIC. SOLDER CONTACT INTO CENTER CONDUCTOR AS SHOWN. DO NOT OVERHEAT AND SWELL CABLE DIELECTRIC. SEE CRIMP/SOLDER TABLE FOR RECOMMENDED SOLDER TEMPERATURE.
- 5.) INSTALL CABLE ASSEMBLY INTO BODY ASSEMBLY SO THAT THE TUBE PORTION OF BODY SLIDES UNDER BRAID. PUSH CABLE ASSEMBLY FORWARD UNTIL CONTACT SNAPS INTO POSITION.
- 6.) SLIDE CRIMP TUBE OVER BRAID & UP AGAINST CONNECTOR BODY. CRIMP USING APPROPRIATE HEX SIZE CRIMPING TOOL. RECOMMEND USING M22520/5-01 TOOL FRAME.

⚠ WHEN USING RG-142 & RG-400 USE THE GOLD CRIMP TUBE SUPPLIED & DISREGARD NOTE 2. WHEN USING PFLX200-XXX USE THE GOLD CRIMP TUBE SUPPLIED. WHEN USING PFLX195-XXX USE THE SILVER CRIMP TUBE SUPPLIED.

CRIMP/SOLDER INFORMATION

PART NO.	CABLE TYPE	TOOL HEX DIE	HEX SIZE	SOLDER TEMPERATURE
A47195-1	PFLX195-XXX/PFLX200-XXX/RG142/RG400	M22520/5-19	D.21	700-750 ° F (371-399° C)

MATERIAL	SCALE NONE	SIZE B	DATE 8/31/99	 S84 W18693 ENTERPRISE DRIVE MUSKEGO, WI 53150 (888) 679-6170
	CAGE CODE 06WH3	DRAWN J. HERMAN		
FINISH	TOLERANCES UNLESS NOTED .XX = ± .03 .XXX = ± .010 ANGLES ± 1°		DESIGNED	CONTACT, SIZE 7, ARINC 404
			CHECKED	
			APPROVED	FILE A47195-1
				DWG # A47195-1
				SHT 2 of 2

7