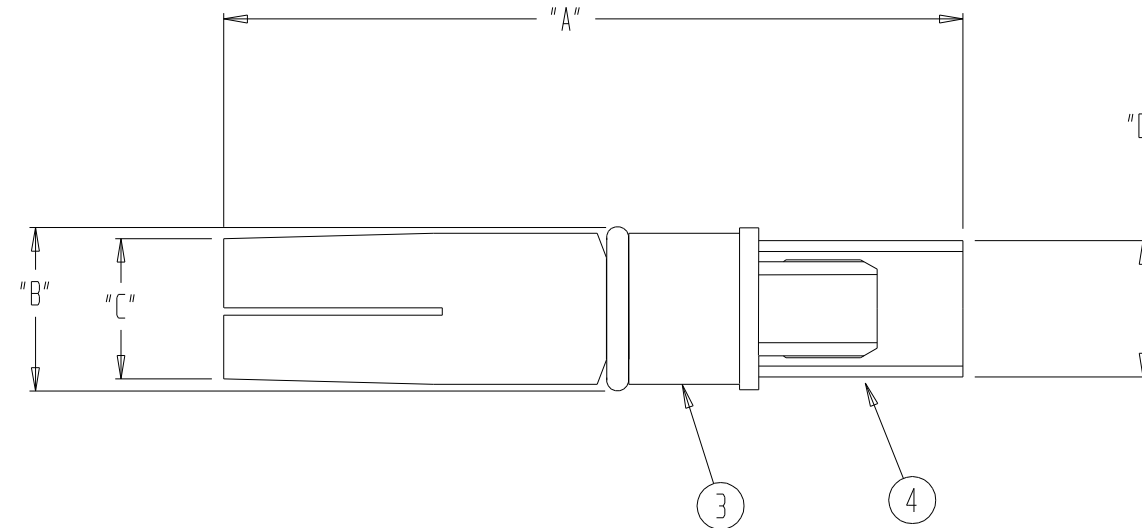


THIS DOCUMENT AND THE INFORMATION IT CONTAINS IS THE PROPERTY OF EMTEQ INC. AND MAY NOT BE USED IN ANY WAY WITHOUT THE EXPRESS WRITTEN CONSENT OF EMTEQ INC.

REV	REVISION	DATE	ER #	INTL
B	DELETED ITEM 5	05/05/2006	5272	LRL
C	ADD -240-1 TO PARTS LIST	06/02/2009	9778	VML
D	ADD RADIAL TO DRAWING DESCRIPTION	07/02/2009	9895	LLP
E	REMOVE 240-1 FROM PARTS LIST	07/09/2009	9917	VML

DIMENSIONAL INFORMATION

PART NO.	"A"	"B"	"C"	"D"	ASS'Y INSTRUCTION
A45175-075-1	1.48 (37.6)	0.30 (7.6)	0.26 (6.6)	0.22 (5.6)	ES-105-19
A45195-1	1.48 (37.6)	0.30 (7.6)	0.26 (6.6)	0.25 (6.4)	ES-105-19



SPECIFICATIONS:

1) ELECTRICAL

IMPEDANCE: 50 OHMS
 FREQUENCY RANGE: 0 TO 5 GHZ
 VOLTAGE RATING: 1,000 V RMS
 DIELECTRIC WITHSTANDIN VOLTAGE: 1,500 RMS
 INSULATION RESISTANCE: 5,000 MEGOHMS MIN.

2) MECHANICAL

TERMINATION STYLE: INNER CONTACT - SOLDER
 OUTER CONTACT - CRIMP
 TEMPERATURE RANGE: -55° C TO +125° C
 FINISHES:
 BODY FINISH: GOLD PLATED PER MIL-G-45204
 CONTACT FINISH: GOLD PLATED PER MIL-G-45204

DESIGNED IN ACCORDANCE WITH ARINC 404B STANDARDS.

QTY	DESCRIPTION	ITEM
	--DELETED--	5
1	29-100-4/29-100-74	4
1	29-100-49	
1	75-930-2BS	3
1	02-1028-2	
1	06-707-4	2
1	06-707-2	
1	15-469-6	1
1	15-469-3	
A45195-1	175-1 PART NUMBER	

MATERIAL	SCALE	SIZE B	DATE 8/30/99	 5349 S. EMMER DRIVE NEW BERLIN, WI 53151 (888) 679-6170
FINISH	TOLERANCES UNLESS NOTED .XX = ± .03 .XXX = ± .010 ANGLES ± 1°		DRAWN J. HERMAN DESIGNED CHECKED T. FORST 07/09/2009 APPROVED <i>[Signature]</i> 07/09/2009	
CAD GENERATED AND MAINTAINED DRAWING -- DO NOT SCALE			CAGE CODE 06WH3	CONTACT, SIZE 5, ARINC 404, RADIAL A45XXX-1 SHT 1 OF 1 FILE: A45XXX.prt

NOTICE -- ALL CHANGES TO THIS DOCUMENT ARE CONTROLLED BY EMTEQ INC / UNLESS OTHERWISE STATED, ALL REPRODUCTIONS OF THIS DOCUMENT ARE NOT CONTROLLED BY EMTEQ INC