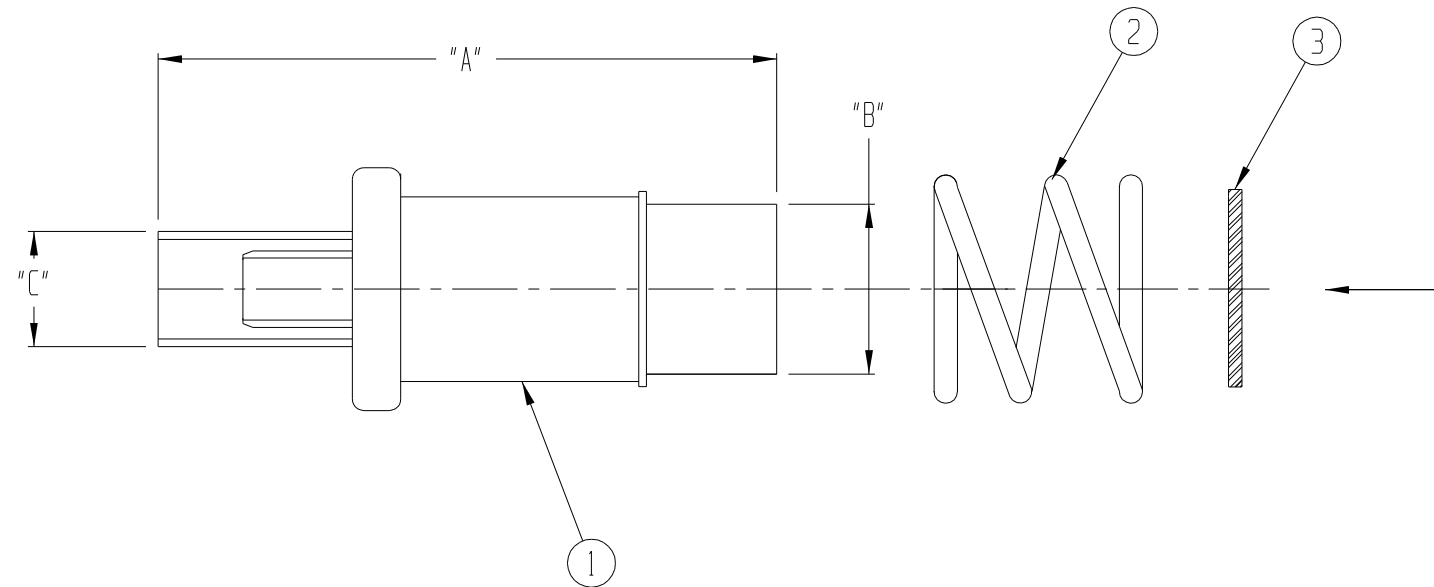
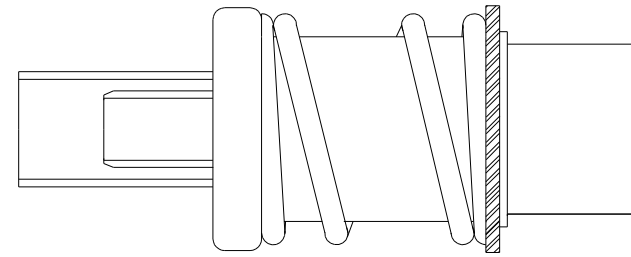


THIS DOCUMENT AND THE INFORMATION IT CONTAINS IS THE PROPERTY OF EMTEQ INC. AND MAY NOT BE USED IN ANY WAY WITHOUT THE EXPRESS WRITTEN CONSENT OF EMTEQ INC.

| REV | REVISION | DATE | ER # | INTL |
|-----|---|------------|------|------|
| D | UPDATE DRAWING, ADD P/N: RR41-1 TO B.O.M, CHANGE NOTE 3 | 01/27/2005 | 4350 | LRL |

DIMENSIONAL INFORMATION

| PART NO. | "A" | "B" | "C" | ASS'Y INSTRUCTIONS |
|----------|-------------|-------------|------------|--------------------|
| A43240-1 | 1.59 (40.4) | 0.44 (11.2) | 0.30 (7.6) | ES-105-16 |



SPECIFICATIONS:

- 1) ELECTRICAL
 IMPEDANCE: 50 OHMS
 FREQUENCY RANGE: 0 TO 5 GHZ
 VOLTAGE RATING: 1,000 V RMS
 DIELECTRIC WITHSTANDIN VOLTAGE: 1,500 RMS
 INSULATION RESISTANCE: 5,000 MEGOHMS MIN.

- 2) MECHANICAL
 TERMINATION STYLE: INNER CONTACT - SOLDER
 OUTER CONTACT - CRIMP
 TEMPERATURE RANGE: -65° C TO +125° C
 FINISHES:
 BODY FINISH: GOLD PLATED PER MIL-G-45204
 CONTACT FINISH: GOLD PLATED PER MIL-G-45204

DESIGNED IN ACCORDANCE WITH ARINC 404B STANDARDS.

- 3) USE ADJUSTABLE RETAINING RING PLIERS FOR INSTALLATION.

| QTY | PART NUMBER | DESCRIPTION | ITEM |
|-----|------------------|--------------------|------|
| 1 | ATUM-3/8-BLKEMTQ | BLK HEATSHRINK | 4 |
| 1 | RR41-1 | RING, RETAINER | 3 |
| 1 | SP41-1 | SPRING, RETAINER | 2 |
| 1 | 75-931-1 | CONNECTOR ASSEMBLY | 1 |

ASSEMBLY PARTS LIST

| | | | | |
|--|--|--------|---|--|
| MATERIAL | SCALE | SIZE B | DATE 08/30/99 | S84 W18693 ENTERPRISE DRIVE MUSKEGO, WI 53150 (888) 679-6170 |
| FINISH | TOLERANCES UNLESS NOTED .XX = ± .03 .XXX = ± .010 ANGLES ± 1° | | DRAWN J. HERMAN DESIGNED CHECKED <i>[Signature]</i> 01/31/2005 APPROVED P. VANG 01/31/2005 | |
| CAD GENERATED AND MAINTAINED DRAWING -- DO NOT SCALE | | | CAGE CODE 06WH3 | CONTACT, SIZE 3, ARINC 404 DWG # A43240-1 SHT 1 OF 1 |

NOTICE -- ALL CHANGES TO THIS DOCUMENT ARE CONTROLLED BY EMTEQ INC / UNLESS OTHERWISE STATED, ALL REPRODUCTIONS OF THIS DOCUMENT ARE NOT CONTROLLED BY EMTEQ INC

FILE: A43240-1.prt