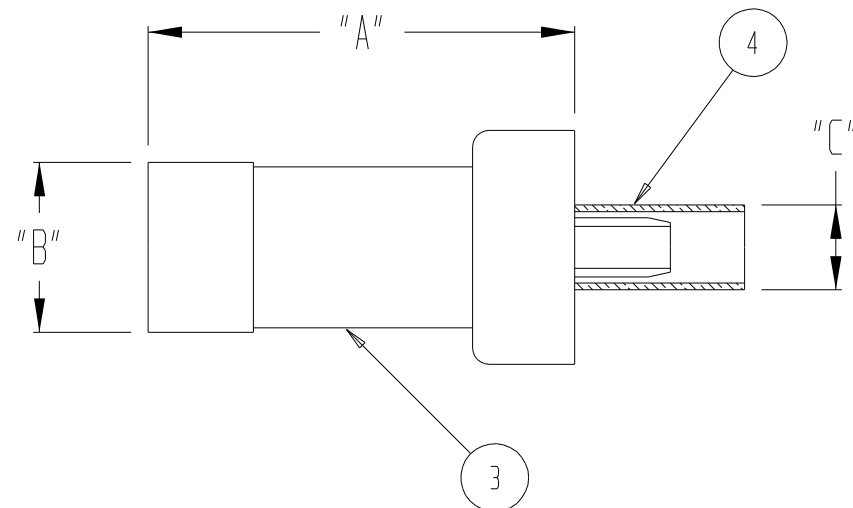


THIS DOCUMENT AND THE INFORMATION IT CONTAINS IS THE PROPERTY OF EMTEQ INC. AND MAY NOT BE USED IN ANY WAY WITHOUT THE EXPRESS WRITTEN CONSENT OF EMTEQ INC.

REV	REVISION	DATE	ER #	INTL
H	CHANGE A41480-1 TO A41488-1	07/28/2009	9974	VML
J	CHANGE P/N'S, ITEM 5, HEATSHRINK	10/29/2009	10252	VML

DIMENSIONAL INFORMATION

PART NO.	"A"	"B"	"C"	ASS'Y INSTRUCTIONS
A41130-1	1.26 (32.0)	0.50 (12.7)	0.22 (5.6)	ES-105-26
A41165-1	1.26 (32.0)	0.50 (12.7)	0.25 (6.4)	ES-105-1
A41195-1	1.26 (32.0)	0.50 (12.7)	0.25 (6.4)	ES-105-1
A41205-1	1.26 (32.0)	0.50 (12.7)	0.30 (7.6)	ES-105-1
A41225-1	1.26 (32.0)	0.50 (12.7)	0.30 (7.6)	ES-105-1
A41240-1	1.26 (32.0)	0.50 (12.7)	0.30 (7.6)	ES-105-1
A41295-1	1.26 (32.0)	0.50 (12.7)	0.39 (9.9)	ES-105-6
A41340-1	1.26 (32.0)	0.50 (12.7)	0.39 (9.9)	ES-105-6
A41400-1	1.26 (32.0)	0.50 (12.7)	0.39 (9.9)	ES-105-6
A41488-1	1.26 (32.0)	0.50 (12.7)	0.54 (13.7)	ES-105-6
A41500-1	1.26 (32.0)	0.50 (12.7)	0.56 (14.2)	ES-105-6



SPECIFICATIONS:

- ELECTRICAL
 IMPEDANCE: 50 OHMS
 FREQUENCY RANGE: 0 TO 5 GHZ
 VOLTAGE RATING: 1,000 V RMS
 DIELECTRIC WITHSTANDING VOLTAGE: 1,500 V RMS
 INSULATION RESISTANCE: 5,000 MEGOHMS MIN

- MECHANICAL
 TERMINATION STYLE: INNER CONTACT - SOLDER
 OUTER CONTACT - CRIMP
 TEMPERATURE RANGE: -65° C TO + 125° C
 FINISHES:
 BODY FINISH: GOLD PLATED PER MIL-G-45204
 CONTACT FINISH: GOLD PLATED PER MIL-G-45204

DESIGNED IN ACCORDANCE WITH ARINC 404B STANDARDS.

											29-109-9	INNER TUBE (130-1 ONLY)	7
1	1	1	1	1	1	1	1	1	1	1	RR41-1	MOUNTING HARDWARE	6
1	1	1	1	1	1	1	1	1	1	1	SP41-1		
						1	1	1	1	1	29-174-2	DURABLE HEATSHRINK	5
		1	1	1							ATUM 1/2 BLK		
1	1										29-174-4	CRIMP TUBE	4
										1	29-100-12		
		1									29-100-56		
										1	29-100-74/29-100-4		
											29-141-2		
										1	29-140-2		
										1	29-140-4		
											29-138-2		
										1	29-137-2		
1											29-100-92		
	1										29-100-70		
			1								29-100-68		
					1						29-100-63		
						1					02-917-11		
		1									02-917-10		
1											09-196-2		
	1										09-196-1		
			1	1							02-917-6		
								1	1		02-917-2		
										1	09-203-1		
										1	02-917-4		
		1									06-665-35		
	1										06-682-4		
1						1	1	1			06-682-6		
									1	1	06-665-18		
										1	06-665-26		
											06-665-12		
										1	15-469-17		
										1	15-469-8		
1											15-345-3		
	1										15-345-2		
										1	15-469-10		
											15-469-5		
										1	15-469-4		
											15-469-3		
500-1	488-1	400-1	340-1	295-1	240-1	225-1	205-1	195-1	165-1	130-1	PART NUMBER	DESCRIPTION	ITEM
A41#											LIST OF MATERIAL		

MATERIAL	SCALE	SIZE B	DATE 8/10/99	5349 SOUTH EMMER DRIVE NEW BERLIN, WI 53151 (888) 679-6170
	FINISH	TOLERANCES UNLESS NOTED .XX = ± .03 .XXX = ± .010 ANGLES ± 1°	DRAWN J. HERMAN DESIGNED CHECKED <i>[Signature]</i> 11/02/2009 APPROVED T. FORST 01/11/2010	
CAD GENERATED AND MAINTAINED DRAWING -- DO NOT SCALE				CONTACT, SIZE 1, ARINC 404 CAGE CODE DWG # 06WH3 A41XXX SHT 1 OF 1
NOTICE -- ALL CHANGES TO THIS DOCUMENT ARE CONTROLLED BY EMTEQ INC. / UNLESS OTHERWISE STATED, ALL REPRODUCTIONS OF THIS DOCUMENT ARE NOT CONTROLLED BY EMTEQ INC.				

FILE: A41XXX.prt